

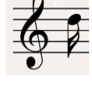


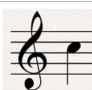


PIPING & DRUMMING QUALIFICATIONS BOARD

PRACTICE CHANTER SCQF LEVEL 2

Time Allowed – 1 Hour

Music notation – The Unit:-

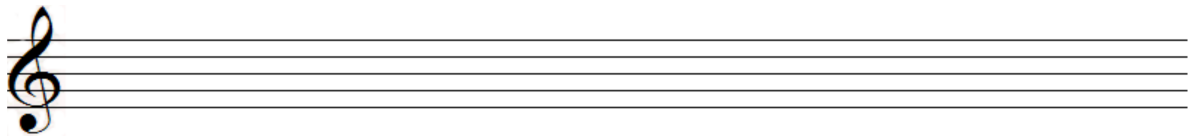
1. Complete the table below giving the **Pitch Name** (letter name), the **Duration Name** and the **Duration Value** of the Notes provided. An example of the answer requirements is provided in the first line of the table.

Note	Pitch Name	Duration Name	Duration Value
	D	Quaver	Eighth note (or 1/8)
			
			
			
			
			
			
			
			

/12

2. On the blank staff below, write pitches of the following durations.

B minim ((half note - (1/2))
High G quaver ((eighth note - (1/8))
D crotchet ((quarter note - (1/4))
F demi-semi-quaver ((thirty-second note – 1/32))
Low A semi-quaver ((sixteenth note – 1/16))
E semi-breve ((whole note – (1))
C quaver (eighth note – (1/8))
High A crotchet (quarter note – (1/4))



/8

3. Explain how the duration of a note is affected when a dot is added **after it**. Provide an example showing the effect to the duration note you have chosen when the dot is added.

For example: A musical notation example showing a dotted quarter note (a vertical stem with a flag and a dot) followed by an equals sign, then a quarter note (a vertical stem with a flag) followed by a plus sign and an eighth note (a vertical stem with a flag).

/2

4. Explain how the duration of a note is affected when a tail is added. Provide an example showing what would happen to the original note you have chosen when the tail is added.

For example: A musical notation example showing a quarter note (a vertical stem with a flag) followed by a plus sign and the word 'tail', followed by an equals sign and an eighth note (a vertical stem with a flag).

/2

- Draw a stave.
- Draw the Treble Clef in the correct position
- Divide the stave into four equal bars using bar lines.
- Insert, into each bar, note(s) or note groups that are equal to the value of two crotchets (quarter notes). Each Bar should contain different examples.

6. Draw on the staff below how you would indicate a line of music was to be repeated.



7. Copy the following piece of music onto the blank staff provided below:



If you are now ready to hand-in your paper, our advice is to take time (if still available) to carefully check your answers before handing in your paper. Please check that you have read the questions correctly and answered appropriately.

Practice Chanter maintenance - The Unit – an oral examination conducted during the practical activity.

8. Oral Maintenance activity – This section will be completed by the Assessor based on the Oral Examination activity conducted in the practical session:-

/12

TOTAL /50